

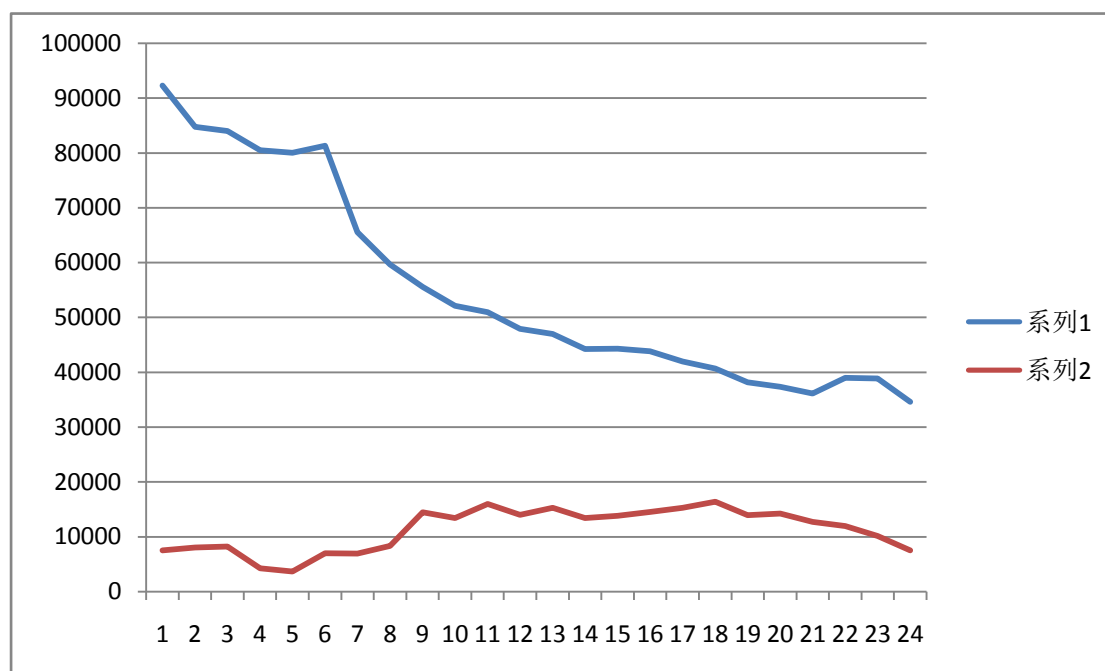
Weekly Report (2014.06.02-2014.06.08)

GuoFangzhou

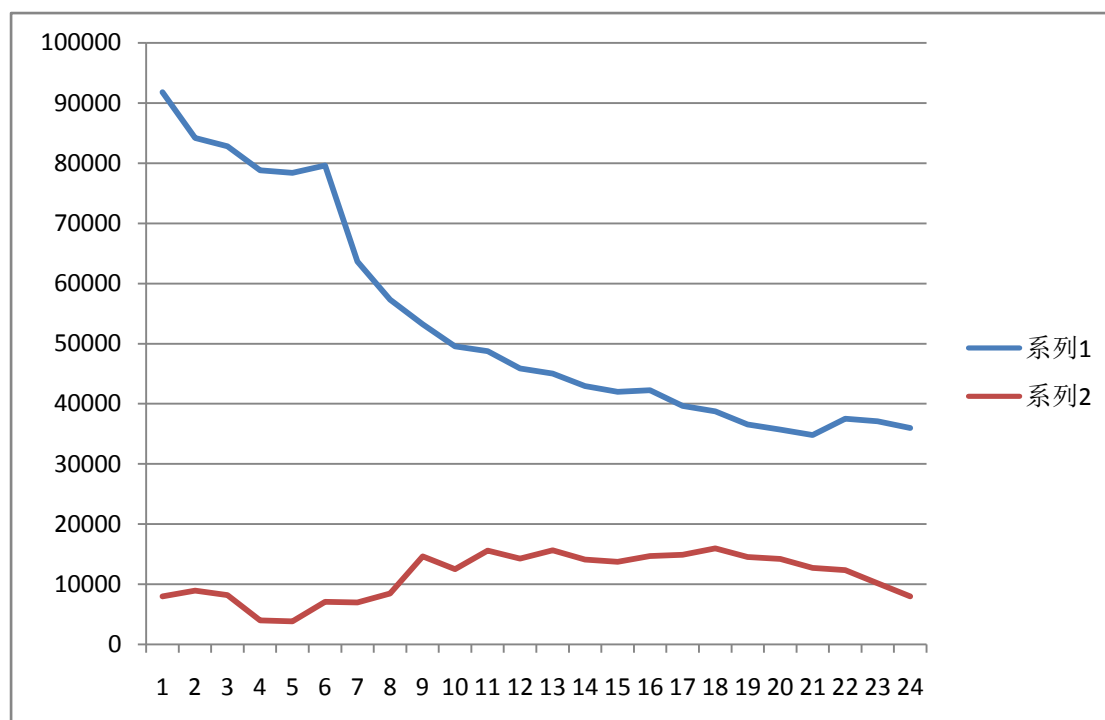
1. Mobile Data

This week I extracted the data of 2013.12.18 and 2013.12.20 at HuZhou. I did the statistics of moving people and still people of each hour.

The result of 2013.12.18 is showing bellow, the series 1 is the count of moving people and the series 2 is the count of still people:



The result of 2013.12.20 is showing below, the series 1 is the count of moving people and the series 2 is the count of still people:



The air quality on 12.18 is good and the air quality on 12.20 is bad. From the two pictures we can see that the trend of each series are almost the same which means that no matter how bad the air quality is, the behavior of citizens are the same in the weekdays.

The current statistics is rather rough. It can only show that when the air quality is not good, citizens will still go out. But whether the places they go changed or not can't be concluded

Next week I think that more details have to be visualized to see the difference between 12.18 and 12.20.

2. Survey of Traffic Visualization

I finished the outline of the survey.

3. Summer Camp

Finished.